



Fraser Street, London, W4 2DA

Guide Price £950,000

WHITMAN & CO.

SALES · LETTINGS · COMMERCIAL

- Victorian terraced house
- Potential to extend and remodel
- 37' private garden
- Sought after Glebe Estate
- Fantastic transport links
- No onward chain

Tenure - Freehold
Local Authority - Hounslow
Council Tax - Band F

THE PROPERTY

A charming three-bedroom period cottage ideally located in the highly sought-after Glebe Estate, offering close proximity to a wide range of local amenities.

The property features three double bedrooms, a large loft with potential to convert (STPP), a 23'4" reception room, a 16'8" kitchen/breakfast room, and a 37' private garden.

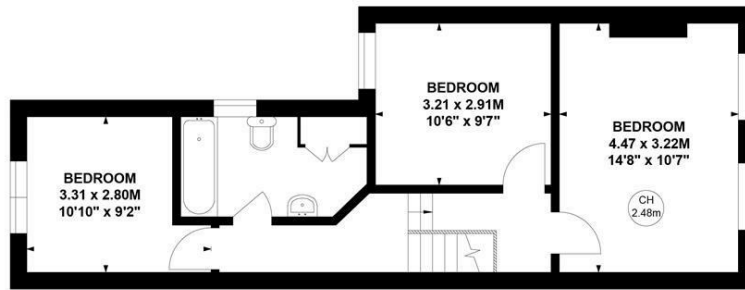
Ideally situated within easy reach of Turnham Green Tube Station and the extensive selection of shops, cafés, and restaurants on Chiswick High Road, as well as the picturesque Chiswick House and Gardens and the River. Offered with no onward chain.

Fraser Street, W4

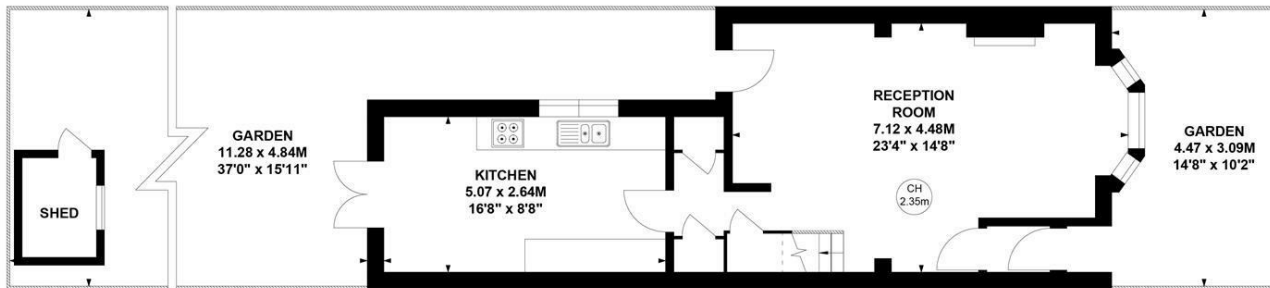
Approximate gross internal area

93.85 sq m / 1010 sq ft

Key :
CH - Ceiling Height



First Floor



Ground Floor

Not to scale, for guidance only and must not be relied upon as a statement of fact.
All measurements and areas are approximate only

SITUATION



5-7 Turnham Green Terrace, Chiswick, London, W4 1RG

Tel 020 8747 8800

E-mail sales@whitmanandco.com

Website www.whitmanandco.com